

**Infrared camera
for condition monitoring
and early fire detection**

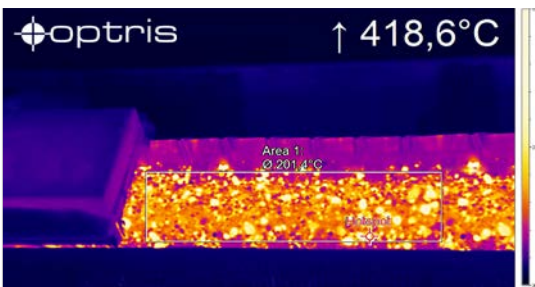


Features:

- Dedicated product package for outdoor condition monitoring and fire detection
- Environmental rating IP66 and an integrated air purge ensure reliable 24/7 operation under harsh conditions
- Built-in heater/ fan for a wide operating temperature range of - 40 °C up to 50 °C
- IR camera with 382 x 288 px and HD video camera with 1280 x 720 px
- USB-Server Gigabit (PoE) for easy integration of both camera streams (IR + VIS) in video management systems



©Kenneth Sponsler - stock.adobe.com



Specifications Outdoor protective housing

Environmental rating	IP 66
Operating Temperature range	-40 °C ... 50 °C
Heating	PTC heater (starts automatically at T <15 °C) / Fan for homogeneous temperature distribution
Power supply	24 V DC (or PoE) ¹⁾
Power	70 W
Current draw	3 A (short term: 6 A)
Air purge collar	Integrated
Air pressure	Absolute pressure 1.1 bar at 20 – 100 l/min
Material	Aluminum
Weight	2 kg / 2.5 kg with wall mount bracket
Max. FOV	90° (HFOV)

¹⁾ PoE is not applicable for heater or fan.

Specifications IR camera Xi 400

Measurement ranges	- 20 ... 100 °C/ 0 ... 250 °C/ (20)150 ... 900 °C optional: 200 ... 1500 °C
Optical resolution	382 x 288 pixels
Frame rate	80 Hz / 27 Hz
Thermal sensitivity (NETD)	80 mK
Optics FOV	from 18° to 80° HFOV/ motorized focus
Power supply	USB/ PoE (via USB Server Gigabit)

Specifications visual camera

Optical resolution	1280 x 720 pixels
Frame rate	30 Hz
Lens size	1/4"
Max. FOV	65° (DFOV)
Power supply	USB/ PoE (via USB Server Gigabit)

Scope of Supply

- Outdoor protective housing with Xi 400 IR camera and HD video camera
- Air purge collar
- USB Server Gigabit
- Wall mount

optris Xi 400 CM

TECHNICAL DATA

Dimensions in mm

