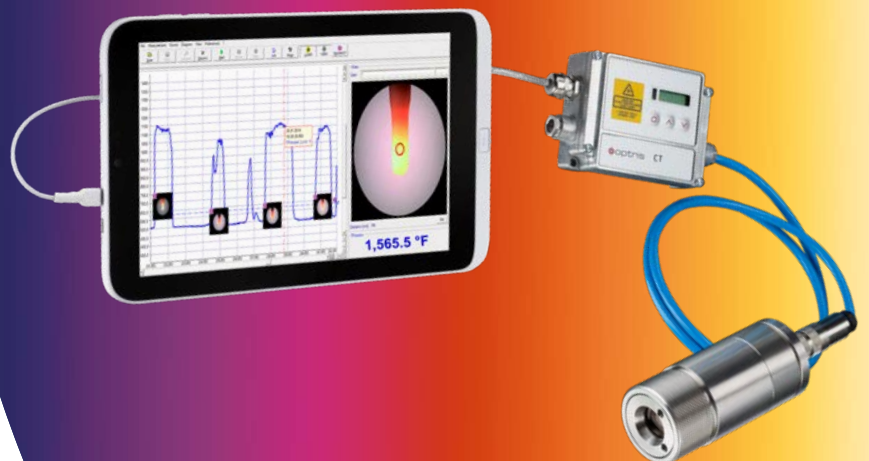




## CTvideo 1M/2M

Precise non-contact temperature measurement of metals and ceramics from 250 °C to 2200 °C (482 °F to 3992 °F) with adjustable focus, patented crosshair laser and video sighting

when temperature matters



# optris CTvideo 1M/2M

## TECHNICAL DATA

### Features:

- Parallel use of video sighting and crosshair laser for easy sensor alignment (measuring spots up from 0.5 mm (0.02 in) under all viewing conditions possible)
- Manual focusing for measurement distances from 90 mm (3.5 in)
- Response times up from 1 ms
- Usable in up to 70 °C (158 °F) ambient temperature without cooling and automatic laser switch off at 50 °C (122 °F)
- Short measuring wavelengths of 1.0 μm or 1.6 μm decrease measuring mistakes on surfaces with low or unknown emission rate
- Compact Connect software for fast on-site sensor setup and video alignment or real-time process monitoring



### Measurement specifications

Temperature range (scalable via software)	485 °C ... 1050 °C (905 °F ... 1922 °F) (1ML) 650 °C ... 1800 °C (1202 °F ... 3272 °F) (1MH) 800 °C ... 2200 °C (1472 °F ... 3992 °F) (1MH1) 250 °C ... 800 °C (482 °F ... 1472 °F) (2ML) 385 °C ... 1600 °C (725 °F ... 2912 °F) (2MH) 490 °C ... 2000 °C (914 °F ... 3632 °F) (2MH1)
Spectral range	1.0 μm (1M) / 1.6 μm (2M)
Optical resolution (90 % energy)	150:1 (1ML, 2ML) 300:1 (1MH, 1MH1, 2MH, 2MH1)
System accuracy <sup>1)</sup> (at T <sub>amb</sub> = 23 ± 5 °C [at T <sub>amb</sub> = 73 ± 9 °F])	± (0.3 % of reading + 2 °C) ± (0.3 % of reading + 36 °F)
Repeatability (at T <sub>amb</sub> = 23 ± 5 °C [at T <sub>amb</sub> = 73 ± 9 °F])	± (0.1 % of reading + 1 °C) ± (0.1 % of reading + 34 °F)
Temperature resolution	0.1 K (1ML, 2ML) 0.1 K (1MH, 1MH1, 2MH, 2MH1)
Exposure time <sup>2)</sup>	1 ms (90 %)
Emissivity / Gain (adjustable via software)	0.100 – 1.100
IR window correction (adjustable via software)	0.100 – 1.000
Signal processing (parameter adjustable via software)	Peak hold, valley hold, average; extended hold function with threshold and hysteresis
Software (incl.)	optris® Compact Connect (Sensor setup, video sighting and process monitoring)

### General specifications

Environmental rating	IP 65 (NEMA-4)
Ambient temperature	–20 °C to 70 °C (50 °C with laser ON) (–4 °F to 158 °F (122 °F with laser ON)
Storage temperature	–40 °C to 85 °C (–40 °F to 185 °F)
Relative humidity	10–95 %, non-condensing
Vibration	IEC 60068-2-6 (sinus shaped) IEC 60068-2-64 (broadband noise)
Shock	IEC 60068-2-27 (25G and 50G)
Weight	600 g (21.2 oz) (sensing head) 420 g (14.8 oz) (electronics)

### Electrical specifications

Output / analog	0/4 – 20 mA, 0-5/10 V, thermocouple J, K
Alarm output	24 V/50 mA (open collector)
Output / digital	USB 2.0 Ethernet (via optional USB server)
Video sighting	Digital (USB 2.0), 640 x 480 px, FOV 3.1° x 2.4°
Output impedances	mA max. 500 Ω (with 8-36 V DC) mV min. 100 kΩ load impedance, thermocouple 20 Ω
Inputs	Programmable functional inputs for external emissivity adjustment, ambient temperature compensation, trigger (reset of hold functions)
Cable length (sensor + electronics)	3 m (standard), 5 m, 10 m (9.8 ft [standard], 16.4 ft, 32.8 ft)
Cable length (USB)	5 m, extendable up to 100 m over Ethernet (16.4 ft, expandable up to 328.1 ft over Ethernet)
Current draw (laser)	max. 160 mA
Power supply	8 – 36 V DC
Laser 635 nm	1 mW, ON/OFF via electronic box or software

<sup>1)</sup>  $\tau = 1$ , response time 1 s

<sup>2)</sup> With dynamic adaptation at low signal levels

<sup>3)</sup> The functioning of the LCD display may be limited in ambient temperatures below 0 °C.

# optris CTvideo 1M/2M

## TECHNICAL DATA

### Optical parameters

The vario optics of the CTvideo allows a smooth focusing of the optics to the desired distance.

The following tables show examples of measurement distances and the corresponding measurement spot sizes:

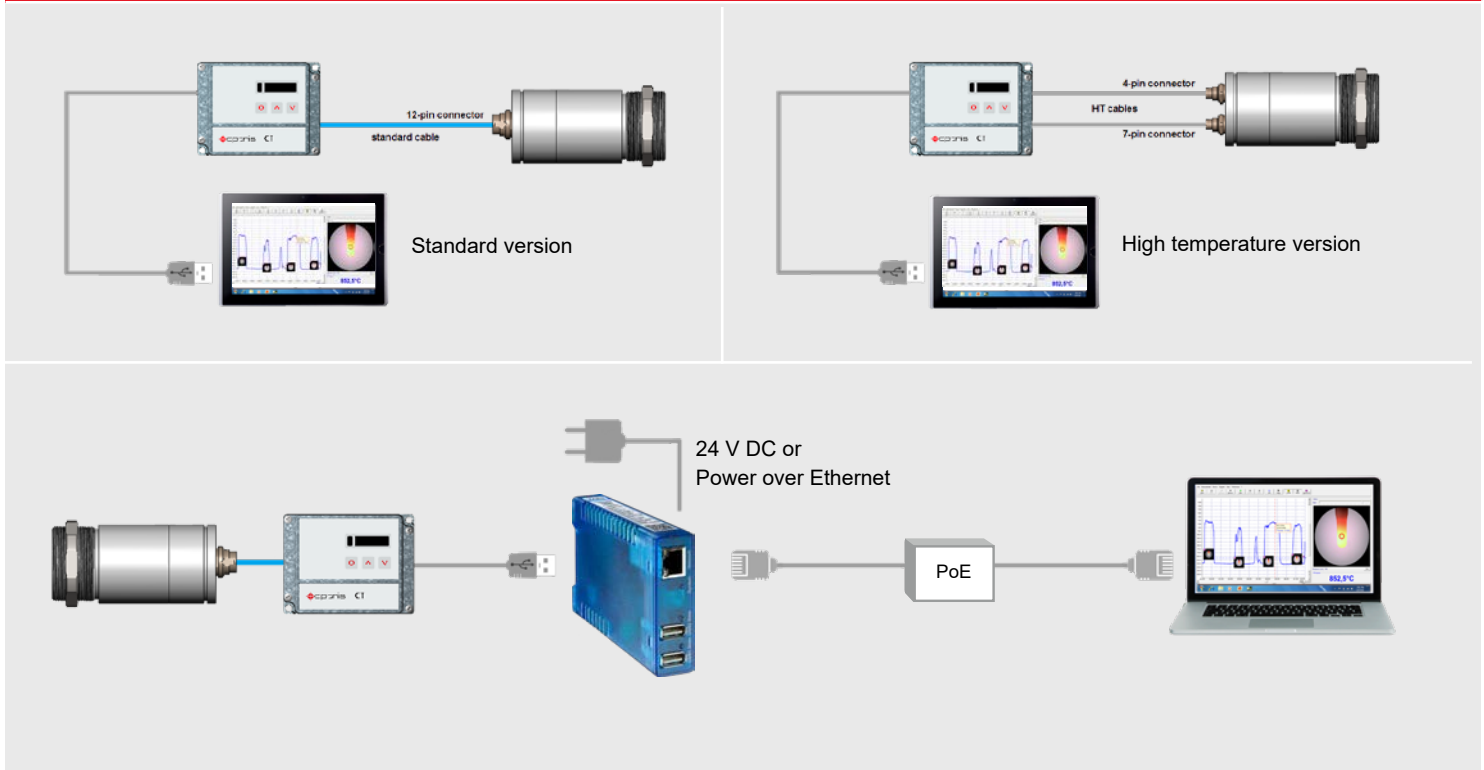
The sensors are available in two versions:

Standard focus (SF): 200 mm (7.9 in) till infinity

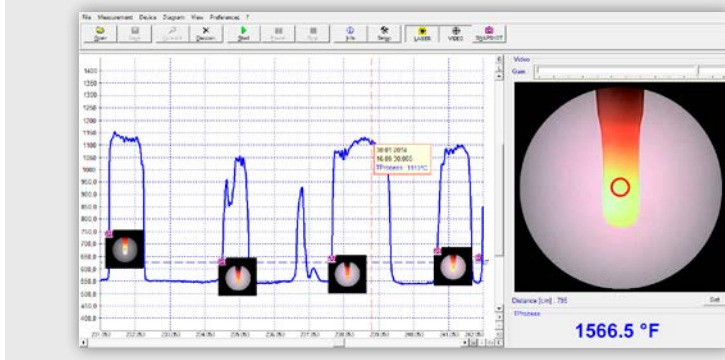
Close focus (CF): 90 mm till 250 mm (3.5 in till 9.8 in)

	1ML, 2ML: SF optics (150:1)								1ML, 2ML: CF optics (150:1)					
Meas. spot size in mm (in)	1.3 (0.05)	2.0 (0.1)	3.0 (0.1)	4.7 (0.19)	7.3 (0.29)	10.7 (0.42)	16.7 (0.66)	33.3 (1.31)	0.6 (0.02)	0.8 (0.03)	1.0 (0.04)	1.2 (0.05)	1.4 (0.06)	1.7 (0.07)
Meas. distance in mm (in)	200 (7.9)	300 (11.8)	450 (17.7)	700 (27.6)	1100 (43.3)	1600 (63.0)	2500 (98.4)	5000 (196.9)	90 (3.5)	120 (4.7)	150 (5.9)	180 (7.1)	210 (8.3)	250 (9.8)
	1MH, 1MH1, 2MH, 2MH1: SF optics (300:1)								1MH, 1MH1, 2MH, 2MH1: CF optics (300:1)					
Meas. spot size in mm (in)	0.7	1.0 (0.04)	1.5 (0.06)	2.3 (0.09)	3.7 (0.15)	5.3 (0.21)	8.3 (0.33)	16.7 (0.66)	0.3 (0.01)	0.4 (0.02)	0.5 (0.02)	0.6 (0.02)	0.7 (0.03)	0.8 (0.03)
Meas. distance in mm (in)	200 (7.9)	300 (11.8)	450 (17.7)	700 (27.6)	1100 (43.3)	1600 (63.0)	2500 (98.4)	5000 (196.9)	90 (3.5)	120 (4.7)	150 (5.9)	180 (7.1)	210 (8.3)	250 (9.8)

### Connection modes



### Software included



- Automatic snapshots (time- or temperature dependent) to control and document the process
- Graphic display and recording of the measurement values
- Setup of sensor parameters and signal processing functions
- Remote control of the sensor

