



**Mechanical accessories**

			
<b>ACCTLFB</b> Mounting bracket, adjustable in one axis	<b>ACCTLAB</b> Mounting bracket, adjustable in two axes	<b>ACCJAB</b> Mounting bracket for CoolingJacket, adjustable in two axes	<b>ACCTXLAB</b> Mounting bracket CT XL, adjustable in two axes
			
<b>ACHAMA</b> Mounting adapter: Mounting and pipe flange	<b>ACCTCOV</b> Closed cover for CT electronic box	<b>ACCTRAIL</b> Rail mount adapter for CT electronics	<b>ACCTLTA20UN</b> Thread adapter M48x1,5 to 20 UN-2A thread incl. mounting nut

**Air purges and cooling units**

		
<b>ACCTAPMH</b> Air purge collar CRatio	<b>ACCTLAP</b> Air purge collar CxL/ CxV	<b>ACCTLW</b> Water cooled housing CxL/ CxV, stainless steel, for $T_{amb}$ up to 175 °C
		
<b>ACCTLCJ</b> CoolingJacket (stainless steel) for CSLaser/ CTlaser/ CSvideo/ CTvideo	<b>ACCTXLAP</b> Air purge collar CT XL	

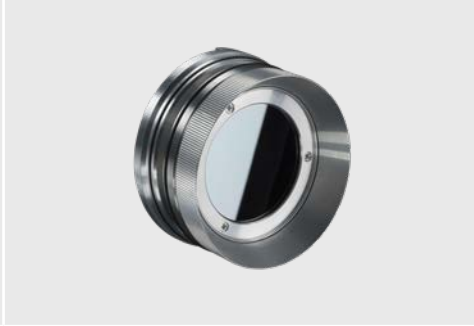
# optris Accessories

## HIGH PERFORMANCE SERIES

### Optical accessories



**ACHAST300 + ACHAPA**  
Sighting tube M48x1,5, 300 mm length +  
pipe adapter with M48x1,5 internal thread

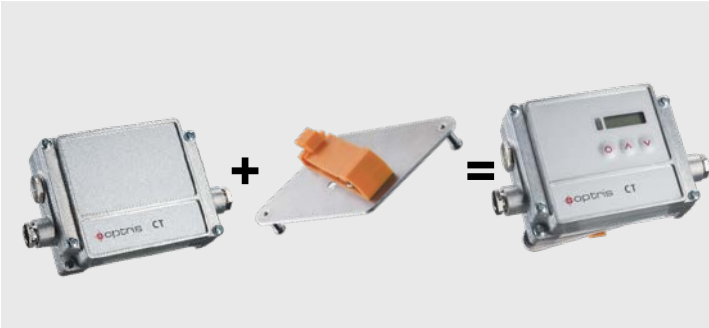


**ACCJAFUxx + ACCJAPWPI2xxLW /  
ACCJAFUxx + ACCJAPWCTLSW**  
Focussing unit with protective window for CoolingJacket



**ACCJAFUxx + ACCJAPGMS 2 or 3**  
Focussing unit with protective grid for CoolingJacket  
Advanced

### Combinations



**CT electronic box** + **ACCTRAIL**  
Rail mount adapter = **Electronic box on rail mount  
adapter**



**ACHAMA**  
Mounting adapter + **ACHAST300 / ACHAPA**  
Sighting tube / pipe adapter = **ACCTLRM**  
Furnace wall mount for  
CSlaser/ CTlaser



**CT electronic box** + **ACCTCOV**  
Closed cover for CT elec-  
tronic box = **Closed CT electronic box**



**ACCTLAP**  
Air purge + **ACCTLW**  
Water cooled housing = **Cooling sensing head  
+ purging of optics**



**ACCTLCA**  
CoolingJacket Advanced + **ACCJAPLS**  
Air purge laminar for CoolingJacket Advanced = **CoolingJacket Advanced with air purge laminar**